

Kerchief Adina/ D

Size after blocking approx: 66" x 10"

Material: about 460 yards of Lace yarn (designer used 50 gram of Tausendschön Lace)

Needle US # 6, approx. 200 Rocailles seed beads # 8, crochet hook to thread the beads and work the lace edge .

Row counter

The pattern is worked in garter stitch.

Row 1-5: cast on 231 stitches and knit.

Row 6: work 1 increase between 2nd and 3rd stitch at the beginning of row, and 1 increase between 3rd and 2nd to last (233 stitches)

Now work in short rows - to avoid holes you need to create a double stitch on every first stitch after each turn (an excellent tutorial on how to make a double stitch can be found here: <http://www.socktopus.co.uk/2011/02/short-rows-double-stitches/>)

After you worked the back of the double stitch, you will place 1 bead by threading the working yarn through the bead and place the newly formed stitch on the right hand needle. (One additional stitch made)

Work as follows - selvage stitch, k119, turn, k6, turn, k6, place bead, k5, turn. K12, place bead, k5, turn.

K 18, place bead, k5 turn. **Continue working like before, adding 5 more stitches and a bead at the end of each row.**

Increase additional 7 stitches evenly spread on row 40, starting from center stitch.

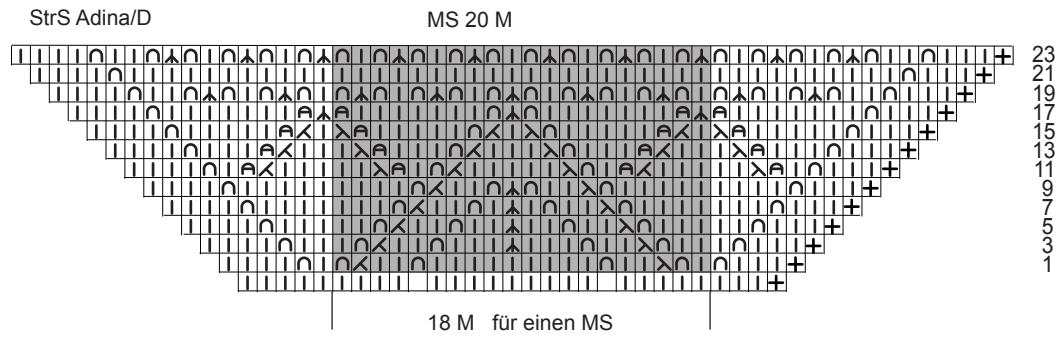
Continue working in short rows until all stitches are used.

Work 10 more rows, every other row work increases like described in row 6.

Work 1 more row and evenly increase stitches to a total of 315.

For the lace edge work the chart pattern.

Start with row 1 and 4 stitches before pattern repeat [4 sts. + 306 sts. (17 times pattern repeat) + 5 = 315] ending with 5 stitches after pattern repeat.



After row 24 of chart start binding of by working crochet edge * ch. 6, sc1 in next stitch, ch 6, sc 1 in next 3 stitches .* Repeat from * to *.

Legend

- ↙ k2tog
- | knit
- ⌘ add bead
- ∩ yam over
- ↗ slip 2 tog knitwise, k1, p2sso
- ↘ ssk